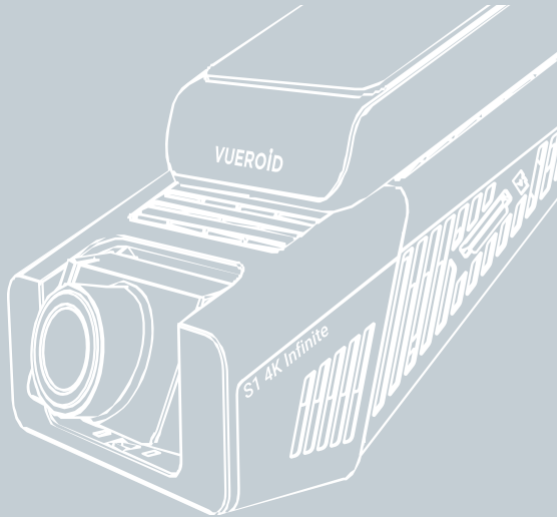


S1 4K Infinite



User Manual

VUEROID DASH CAM.

Please ensure that you understand the contents of the manual to use the product properly.

VUEROID



www.vueroid.com

CONTENTS

Warning and Safety Information	6
Overview	8
• Included Items	
• Device Overview	
• LED Indicator	
Installation	14
• Insert / Remove the Micro SD Card	
• Device Registration	
• Installing the Main Unit	
• Connect the Main Unit to the Power Sources	
• Connect the Rear Camera &Interior Camera to Main Unit (Optional)	
• Detachment &Reassembly to the Adhesive Mount	
Initial Settings	23
Display & Settings	26
• Live View	
• Settings Overview	
• Settings List	
Viewer	32
• Mobile	
• PC	
Playback	36
• Playback on Dashcam	
• Playback on VUEROID HUB App	
• Playback on PC Viewer	
• Playback via USB-C port (OTG)	
Firmware Upgrade.....	40
• Using VUEROID HUB App	
• Using Micro SD Card	
Compliance	41

Warning and Safety Information

Warning for Safe Usage

- **Use According to Guidelines:** Please follow the instructions in this manual carefully to ensure safe and proper use of the device.
- **Legal Compliance:** Consult local traffic laws and regulations to ensure the proper and lawful use of the dashcam device in your region.
- **Installation Safety:** Install the device in a location that does not obstruct the driver's view or interfere with vehicle controls. Ensure the product is installed correctly. Improper installation may cause the product to fall due to vibration or may result in physical injury.
- **Pre-Use Check:** Inspect the device for any visible damage or malfunction before each use to ensure safe operation. Please ensure that the power cable is properly connected to the device.
- **Prohibited During Driving:** Do not operate this device while driving to avoid distraction.
- **Water and Moisture Exposure:** Do not expose the product to rain, moisture, or water under any circumstances, as it may result in the risk of electric shock or fire.
- **Heat Exposure:** Using the product beyond optimal temperature range may result in reduced performance or malfunction.
- **Power Cable Safety:** Do not handle the power cable with wet hands, and avoid placing connectors near heat sources to prevent damage or injury.
- **Charging Safety:** Use only the genuine power adapter from VUEROID for charging. Using unauthorized chargers may result in damage to the device or pose a safety risk.

Maintenance and Performance Guidelines

- **Damaging Goods:** In cases when the product is damaged or power is disconnected due to an accident or vehicle vibration, recording may be unavailable.
- **Firmware and Software Updates:** Ensure your device's firmware is up to date for optimal performance and safety. Only use official software and updates from authorized sources.
- **Performance Variation:** Device performance may vary depending on the recording environment. It is recommended to regularly check the quality of recordings.
- **Micro SD Card Replacement:** Since the Micro SD Card is an expendable item, please replace it after extended use. Continuous use of the Micro SD Card may lead to recording issues. Regularly check the recording capacity of the Micro SD Card, and replace it when necessary. VUEROID is not responsible for any issues arising from the use of non-genuine Micro SD Cards.
- **Data Backup:** Regularly back up recorded video data to avoid loss.

Usage Limitations

- This device is designed to capture and store video recordings of the surroundings and inside of the vehicle. Certain features may not function as expected due to driving conditions or the vehicle's surroundings, and performance differences may occur between products due to firmware updates intended to enhance reliability and quality.
- Recording functionality may be affected by the condition of the Micro SD Card.
- While this device is capable of capturing video for vehicle accidents, it does not guarantee the recording of all incidents.
- Low-impact collisions may fall outside the sensitivity range of the impact sensor, resulting in the absence of event footage.
- Even though the product is built to endure severe vehicle collisions, recordings may not be available if the device sustains damage in the event of an accident.
- To maintain high video quality, ensure that the camera lens and windshield are clean. Dirt, debris, or substances on these surfaces can negatively impact the clarity of recorded footage.
- This product is intended solely for use within the interior of a vehicle and should not be operated outside this environment.

Warranty Information

- Please contact Vueroid Customer Service (cs@vueroid.com) if you are experiencing issues on Vueroid dashcam.
- Please check the detailed warranty information on our website. (<http://www.vueroid.com/support/warranty-policy/>)

Overview

Included Items



Front Camera
(Main Unit)



Cigar jack
Power Cable



Rear Camera ¹⁾
(Optional)



Rear Camera ¹⁾
Cable (Optional)



USB C to C Cable



Hardwire Kit



Interior Camera ²⁾
(Optional)



CPL



Trim Tool



Foam Tape



Cable Clip



Manual

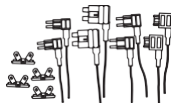
Optional Items (Sold separately)



Micro SD Card



OBD-II Power Cable



Fuse Tap

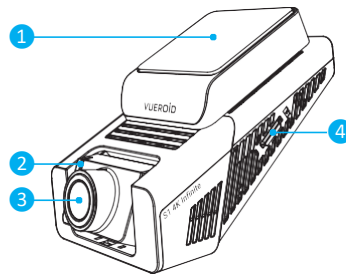


1) Rear camera is included in 2CH & 3CH Package.

2) Interior camera is included in 3CH Package.

Device Overview

Front Camera (Main Unit)



1. Adhesive Mount

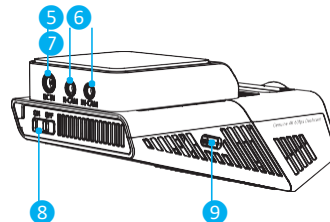
Including GPS & Power module

2. Security LED

Indicating recording status

3. Front Camera Lens

4. Micro SD Card Slot



5. DC-IN Power Port

Connect the power cable

6. V-IN Port for Rear Camera

Connect the rear camera cable

7. V-IN Port for Interior Camera

Connect the interior camera cable

8. Power Switch

Device power On/Off

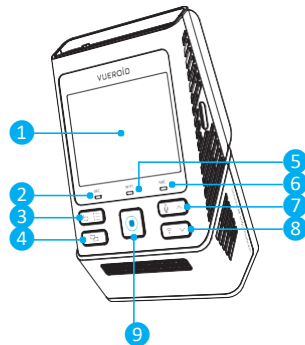
9. USB Type C Port

Connect the data cable &
USB power cable

Overview

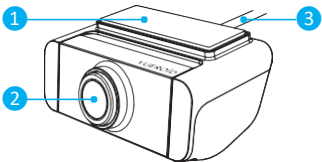
Device Overview

Front Camera (Main Unit)



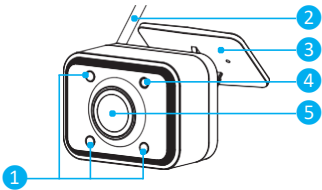
- 1. LCD**
Displaying videos
- 2. Recording Indicator**
Indicating recording status
- 3. Settings (Back) Button**
Entering settings menu / Back
- 4. View Mode Button**
Change view modes
- 5. Wi-Fi Indicator**
Indicating Wi-Fi status
- 6. Audio Recording Indicator**
Indicating audio recording status
- 7. Audio Recording (Up) Button**
Audio recording On/Off &Up
- 8. Wi-Fi (Down) Button**
Wi-Fi On/Off &Down
- 9. Manual Recording (Confirm) Button**
Manual recording &Confirm
Entering OTG Mode

Rear Camera (Optional)



- 1. Adhesive Mount**
- 2. Rear Camera Lens**
- 3. Rear Camera Cable**
Connect the front camera (Main Unit)

Interior Camera (Optional)

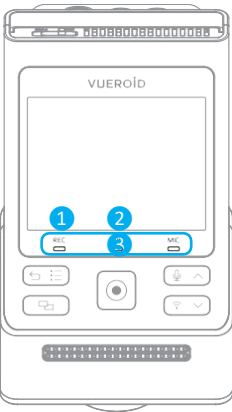


- 1. IR LED**
- 2. Interior Camera Cable**
Connect the front camera (Main Unit)
- 3. Adhesive Mount**
- 4. Ambient Light Sensor**
- 5. Interior Camera Lens**

Overview

LED Indicator

Status LED



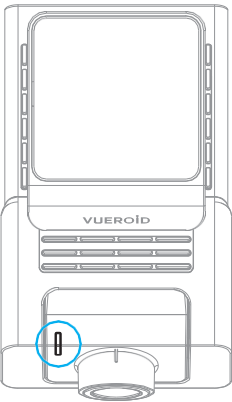
① REC LED	CASE
Red ON	Booting
White ON	Driving recording
White Blinking	Parking recording
Red Blinking	Event recording

② Wi-Fi LED	CASE
OFF	Wi-Fi Off
White ON	Wi-Fi activated
White Blinking	Creating Wi-Fi AP
Red Blinking	Wi-Fi connected to device

③ MIC LED	CASE
OFF	Audio recording Off
White ON	Audio recording On
Red ON	Event audio recording On

① REC LED	② Wi-Fi LED	③ MIC LED	CASE
White Blinking			Upgrading firmware
Red Blinking			Error on Micro SD Card
Red &White Blinking			OTG Mode

Security LED



Security LED	Duration	CASE
White OFF		Booting
White Blinking	1 sec	Error on Micro SD Card
White Blinking	1 sec	Upgrading firmware
White Blinking	0.5 sec	Event &Manual recording
White Dimming		Driving / Parking recording

Installation

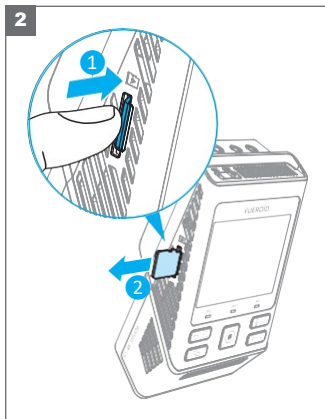
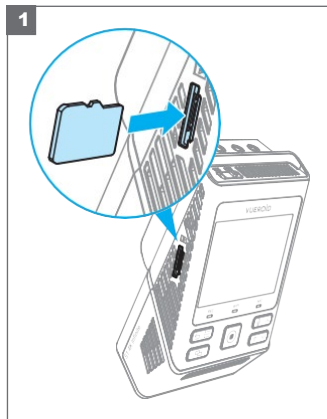
1. Insert / Remove the Micro SD Card

- A Micro SD Card is required for normal device operation and must be purchased separately.
- For optimal device performance and recording quality, we recommend using a genuine VUEROID Micro SD Card.
- For issues arising from not using an official VUEROID Micro SD Card, VUEROID does not provide warranty coverage.
- Since the Micro SD Card is an expendable, please replace it after extended use. Continuous use of the Micro SD Card may lead to recording issues.



Please insert or remove the Micro SD Card like below.

- (1) To insert the SD card, align it with the slot and slide it until you hear a “click”.
- (2) In case of removing Micro SD Card, ensure the camera is turned off and push the Micro SD Card inserted in device with your fingernail.



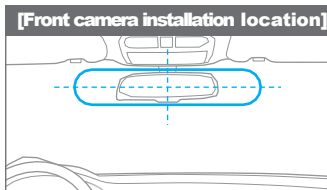
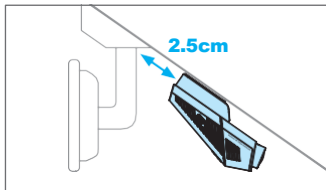
2. Device Registration

Please visit the official VUEROID website (<http://www.vueroide.com/support/product-registration/>) and register your device. For dashcam products, an additional 6-month warranty will be provided upon registration.

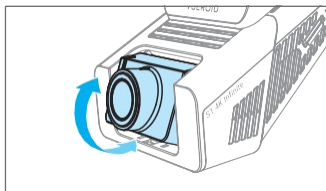
Installation

3. Installing the Main Unit

- (1) Please ensure that the main unit is properly connected to the adhesive mount.
- (2) Determining the installation location, ensure it is at least 2.5cm away from the top of the vehicle to allow proper connection with the rear camera and interior camera.

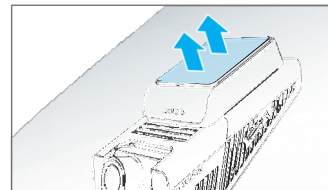
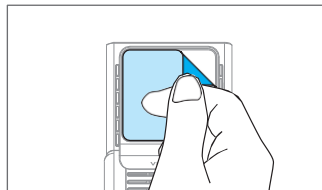


- (3) When installing the main unit, please refer to the pictures below to adjust the camera angle.



Please ensure that the ratio of the car hood visible in the screen does not exceed 20% of the total view.

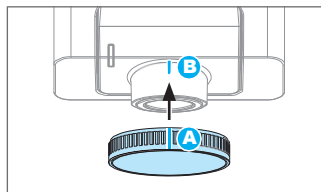
- (4) Clean the attachment location using a dry cloth.
- (5) Remove the film from the sticker on the adhesive mount, then firmly attach it to the selected location. Be cautious when changing the installation location, as the sticker has strong adhesive for stability during operation.



- (6) Remove the lens film attached in front of the camera lens.

- Please select an installation location that does not obstruct the lens's view.
- After installation, ensure it is level horizontally.
- Leave enough space and keep wires from overlapping to prevent interference with other devices such as navigation systems.

CPL filter



Align the 'A' line on the included CPL filter with the 'B' line on the dashcam lens during installation. If the recorded footage is affected by glare or reflections, adjust the CPL filter by rotating it left or right until the image becomes clearer.

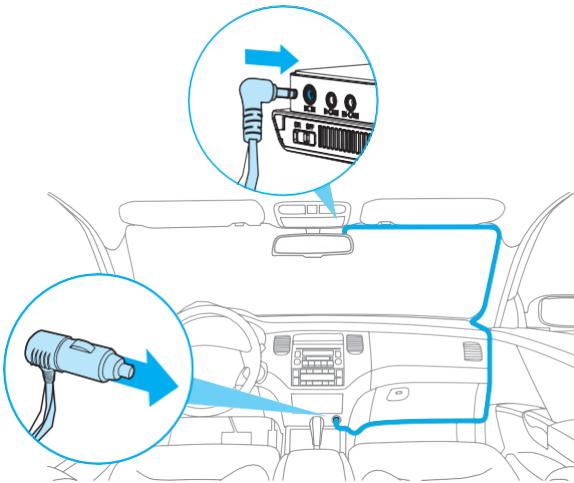
NOTE: It is recommended for use on non-tinted windshields.

Installation

4. Connect the Main Unit to the Power Sources

Connecting with Cigar Jack Power Cable

- (1) Connect the power cable to the DC-IN power port of main unit while the main unit is turned off and then connect cigar jack adapter to the power socket of the vehicle.
- (2) Please use the included trim tool to carefully route the power cable along the vehicle's trim.
- (3) After tuning on the main unit, please adjust the main unit's angle while viewing the device's LCD screen.



Connecting with Hardwire Kit

VUEROID recommends to visit a professional installer to connect hardwire cable.

- (1) Ensure the vehicle is turned off before connecting the hardwire kit.
- (2) Locate the vehicle's fuse box. Refer to the vehicle's manual if necessary.
- (3) Identify the constant power terminal and ACC terminal in the fuse box, then carefully remove the two fuses from each terminal.
- (4) Use an electrical tester to check the input and output slots for the target fuse.
- (5) Connect the BAT (Yellow) wire to the output prong of the constant power fuse and the ACC (Red) wire to the output prong of the ACC fuse.
- (6) Reinsert the fuses into their original slots, ensuring the wires are securely connected to the output prong of each terminal.
- (7) Find a bolt on a metal part of the vehicle's body and securely attach the ground wire (GND (Black)) to it.
- (8) Use the included trim tool to carefully route the power cable from the fuse box to the main unit's installation point, neatly tucking it along the vehicle's trim.
- (9) Connect the power cable to the DC-IN port on the main unit while ensuring the main unit is turned off.
- (10) Turn on the vehicle and the main unit to verify proper operation. Adjust the camera angle while checking the LCD screen.

- When using the cigar power socket, parking recording mode cannot be activated.




- Always use the genuine VUEROID power cable.
- Check the cable and connections carefully during installation to prevent issues.
- Ensure the power cable does not interfere with any vehicle controls.

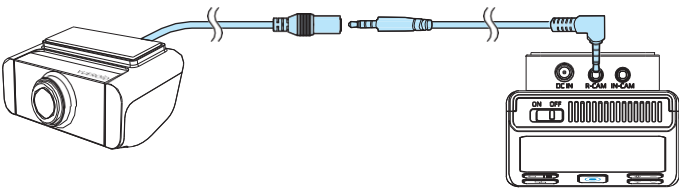
Installation


5. Connect the Rear Camera & Interior Camera to Main Unit (Optional)

Installing Rear Camera


 **Avoid installing the rear camera where it may interfere with the rear window curtain or on the rear window's defroster lines. Before installation, clean the selected area with a dry cloth, as done for the main unit. Remove the adhesive sticker from the main unit and film from lens, and firmly attach the camera to the chosen location.**

- (1) Turn off the main unit power and securely connect the cable to the R-CAM port on the main unit, as well as to the rear camera. (Refer to the image below for connector shapes to avoid confusion.)
- (2) Route the cable along the vehicle's trim to the rear camera's installation location.
- (3) Turn on the the main unit and verify that the rear camera video is displayed correctly.

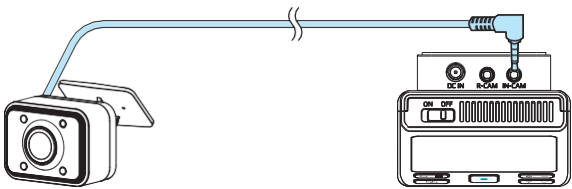


 When connecting a rear or interior camera for the first time, a popup will appear: "Camera configuration has changed. Do you want to switch to the 2CH/3CH system? This will format the system."

Installing Interior Camera

 **Select a position that clearly captures the vehicle interior. To avoid obstructing the driver's view, we recommend installing the camera between the top of the front windshield and the rearview mirror. If this position is not feasible, consider placing it near the sides of the rearview mirror. Before installation, clean the mounting area with a dry cloth.**

- (1) Turn off the main unit power and securely connect the cable to the IN-CAM port on the main unit.
- (2) Route the cable along the vehicle's trim to the installation location of the interior camera.
- (3) Turn on the main unit and verify that the interior camera video is recording properly.

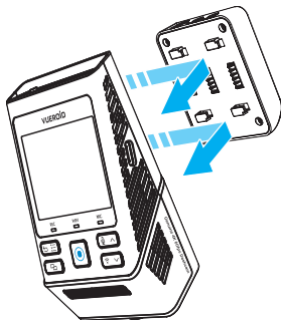


If more camera channels(CH) are selected for recording than current setting, SD card formatting will be required. If you missed the popup, you can configure the recording settings for each camera in Camera > Camera Usage.

Installation

6. Detachment & Reassembly to the Adhesive Mount

- (1) To use the device without removing the mount from the windshield, you can detach the main unit from the adhesive mount after turning off the device, as shown in the picture. After detaching, you can power it through the USB C port for use.



- ※When connecting to a power bank or USB-C power adapter, the device may not boot if the voltage/current supply is insufficient.
- (2) To reassemble it again, slide the device into the mount until a “click” sound is heard.
 - (3) After connecting the device properly, turn on the power and check if the main unit is recording.

Initial Settings

When you turn on the device for the first time or after initialization from the setting menu, you will need to configure the following settings. If you do not wish to set them now, you can skip, and the default values will be automatically applied. Please connect all the cameras you intend to use such as rear or interior cameras to the main unit before starting the setup. This ensures that settings related to the rear or interior cameras can be properly configured.

• Settings: Down , Up , Confirm , Back

Language

- Choose your preferred display language.
- *Default: English*

Date & Time

Date

- The date will be automatically set based on built-in GPS of the device.
- At date setting menu, you can choose how the date is displayed. (YYYY/MM/DD or MM/DD/YYYY or DD/MM/YYYY)
- This setting will be automatically applied to the live view on device and the data stamp in saved videos.
- *Default: MM/DD/YYYY*

Time Zone

- When you select a region of your time zone, it will be automatically applied to the live view on device and the data stamp in saved videos.
- *Default: GMT+0*

Frequency

- To minimize flicker in the video, select proper hz. There may be different hz from country to country.
- *Default: 60hz (NTSC/US)*

Initial Settings

Rear & Interior Camera Usage (Optional)

- If a rear camera and interior camera are connected to the main unit, you can choose whether to enable and record from the rear and interior cameras.
- *Default: On when each camera is connected.*

Resolution & Framerate

- Set the resolution & framerate for the recording.
- *Default: 4K 30p (+ QHD 30p) (+ FHD 30p)*

Front (+Rear Camera)

Driving Recording	Parking Recording
4K 60p (+ QHD 30p)	4K 30p (+ QHD 30p)
4K 30p (+ QHD 30p)	4K 30p (+ QHD 30p)
QHD 60p (+ QHD 30p)	QHD 30p (+ QHD 30p)
QHD 30p (+ QHD 30p)	QHD 30p (+ QHD 30p)

※To save memory capacity, the frame rate is adjusted to 30p when the vehicle is parked.

Front+Rear+Interior Camera

Driving Recording	Parking Recording
4K 60p + QHD 15p + FHD 15p	4K 30p + QHD 15p (+ FHD 15p)
4K 30p + QHD 30p + FHD 30p	4K 30p + QHD 30p (+ FHD 30p)
QHD 60p + QHD 30p + FHD 30p	QHD 30p + QHD 30p (+ FHD 30p)
QHD 30p + QHD 30p + FHD 30p	QHD 30p + QHD 30p (+ FHD 30p)

※If the “Interior Camera Recording” in parking recording settings is disabled, the interior camera will not record while the vehicle is in parking mode.

※To save memory capacity, the frame rate is adjusted to 30p when the vehicle is parked.

Bitrate

- The bitrate setting adjusts the amount of data recorded per second. Higher bitrates improve video quality but also increase file size, which may reduce recording time on the Micro SD Card and its life span. Lower bitrates allow for longer recording times but may slightly reduce video quality.
- *Default: Mid*

Memory Allocation

- You can set the Micro SD Card memory allocation according to your recording priorities—like driving, parking, events, or driving only.
- *Default: Driving Recording Priority*

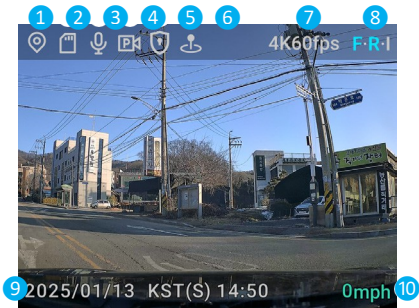
Interior Camera Recording in Parking Mode (Optional)

- This is a menu to set whether the interior camera records during parking mode. If “Off” is selected, videos from the interior camera will not be recorded in parking mode.
- *Default: On*

Display & Settings

Live View

Live View displays the current recording &setting status of the device in real time along with status LED.

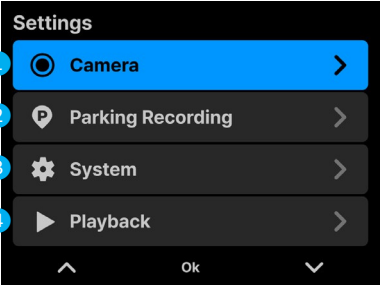


Part	Function
① GPS	GPS status (Connected or Not)
② Micro SD Card Status	Micro SD Card status
③ MIC	ON/OFF status of audio recording
④ Auto Parking Recording	ON/OFF status of auto parking recording
⑤ Event Video Protection	ON/OFF status of event video protection
⑥ Auto REC Off Zone	ON/OFF status of Auto REC Off Zone
⑦ Resolution	The currently recorded resolution and frame rate
⑧ Camera Status	The number of currently connected cameras is displayed, and the channels that are recording are indicated in blue. (F: Front, R: Rear, I: Interior)
⑨ Date &Time	Date &time with time zone
⑩ Speed	Vehicle's speed (mph, km/h)

Settings Overview

At the live view, press to enter the settings menu. When enter settings menu, video recording will be paused.

- Live View: Enter Settings Menu , Audio Recording ON/OFF , Wi-Fi ON/OFF , Change View Mode , Manual Recording
- Settings: Down , Up , Confirm , Back
- Playback: Change List View Mode (Thumbnail or list)



Part	Function
① Camera	Overall camera related settings, such as video quality and event sensitivity etc.
② Parking Recording	Parking mode related settings, such as recording types and vehicle battery protection mode etc.
③ System	Device related settings regarding alerts and the entire device system.
④ Playback	Playback of recorded videos.

Display & Settings

Settings List

Device settings can be changed on the device or in the VUEROID HUB App.

Camera Settings (Settings > Camera)

1. Resolution & Framerate

- Please refer to the information from page 24.

2. Bitrate

- Please refer the information from page 25.

△ If you change the Resolution &Framerate or Bitrate settings, the Micro SD Card will be formatted, and the device will automatically reboot afterward. Therefore, it is recommended to save a copy of your videos on a Micro SD Card before changing the resolution and bitrate.

3. Frequency

- Please refer the information from page 23.

4. Audio Recording

- You can choose whether to record audio in the recorded video file.

5. Video Enhancing

- You can select from Normal, HDR+Infinite Plate Capture, or HDR. If HDR is selected, the HDR Timer menu will be activated, letting you choose whether to use HDR continuously (Always On) or during a specified time period.
- ※Infinite Plate Capture is based on HDR, displaying images by focusing on license plates so that license plates can be easily identified.
- ※The HDR(High Dynamic Range) is for expressing a richer contrast between light and dark areas in photos or videos.
- ※HDR Timer option can automatically turn on or off HDR during the driving recording. If you set the night time, HDR Timer will automatically be turned on HDR at night time. If you select the Always On, HDR will be on continuously.

6. Time-Lapse at driving

- Time-lapse recording mode is recording at 1 fps instead of 30 fps (or more). Event recording files captured during time-lapse mode, including impact events and manual recordings, are saved at their originally set framerate.

7. Event Sensitivity

- For driving, impact sensitivity based on the g-sensor can be set from low to high. For parking, motion and impact sensitivity can be configured separately. If motion sensitivity is turned off, only impacts will trigger recordings during parking.

8. Rotate & Mirror View

- At Rotate &Mirror View, you can manually rotate or flip the video.

9. Event Video Protection

- If an impact is detected by the G-sensor, it will be saved as an event recording. These files will not be overwritten when event video protection is enabled.
- If the event recording folder is full, event recording will stop. In this case, a device pop-up and voice guidance will prompt the user to delete files.
- To ensure stable recording, we recommend backing up event folder files regularly.

10. Camera Usage

- You can manually select the camera(s) you wish to record from.
- Since front camera recording starts automatically when the main unit is powered on, you can only select whether to record from the rear and/or interior cameras.


Parking Recording Settings (Settings > Parking Recording)

Parking Recording Settings		Detail	
Auto Parking Recording		Choose whether or not to automatically switch to parking mode. (Selecting "Off" will fully power down the device and disable recording while the vehicle is parked). In Live View, you can also turn the feature On/Off by pressing and holding the device's Confirm button.	
Vehicle Battery Protection	Discharge Cut-off Voltage	If the vehicle's battery voltage drops below a predetermined level, the device will stop parking recording and remain turned off until the vehicle is started again.	
	Discharge Cut-off Time	After a set time, the device will stop parking recording and remain turned off until the vehicle is started again.	
	Winter Mode	Winter mode(From 1st of November to 31st of March) is a strong discharge prevent mode for winter. The Cut-off Voltage will be automatically raised by 0.2V from the set voltage.	
Parking Mode Delay	No Delay / 90 sec / 3 min	Delay entering into parking mode for a set amount of time after the vehicle is turned off.	
Video Enhancing(P)	Normal / HDR / Premium Night Vision	You can select Video Enhancing mode for video quality during the parking mode. ※The HDR(High Dynamic Range) is for expressing a richer contrast between light and dark areas in photos or videos. ※Premium Night Vision is specialized in nighttime, for extremely dark environments. ※Parking recording does not apply HDR Timer.	
	Extreme Low Power Mode	In Extreme Low Power Mode, after parking recording starts, the device automatically enters sleep mode and records video only when an impact is detected, for 30 seconds after the event.	
Recording Type	On	Impact & Motion	When Extreme Low Power Mode is enabled, the device starts recording upon detecting an impact, recording video for 30 seconds after the impact. If motion is detected before transitioning back to sleep mode, an additional 30 seconds of video is recorded after the motion detection.
		Impact & Time Lapse	When Extreme Low Power Mode is enabled, the device starts recording upon detecting an impact, recording video for 30 seconds after the impact. Then, time-lapse recording (1 fps per second) continues for 100 seconds and is saved. If another impact is detected within this period, the device records for 30 seconds at the originally set framerate.
	Off	Impact & Motion	When motion is detected, the video captures 10 seconds before and 20 seconds after the motion detection. When an impact is detected, the video captures footage up to 20 seconds after the impact. ※To enable motion recording, select Low, Mid, or High (except Off) under Camera > Event Sensitivity > Parking Motion Sensitivity.
		Impact & Time Lapse	Recording at 1 fps per second after entering the parking mode. ※5 minutes of video per recording file.
Interior Cam Recording	On/Off	Choose whether to record with the interior camera in parking recording mode to save storage space and reduce power consumption.	
Auto REC Off Zone	Zone 1, 2, 3	You can designate areas where parking recording is not preferred to save the vehicle's battery. (e.g., home, workplace, etc.). If the vehicle enters one of these designated areas and the engine is turned off, parking recording will not start automatically, even if the auto parking recording is enabled. Up to three zones can be set, with a radius of 30, 50, or 100 yards(m) based on the current GPS location. Settings are based on GPS coordinates, and you must enter the settings menu at the desired location to register or modify the zone.	

Display & Settings

Settings List

Reference: Driving Recording Details

Option	Detail
Driving Recording	Recording videos during the driving and saved in folder every 1 minute unit.
Time-lapse at driving	Recording at 1 fps per second instead of 30 fps (or 60fps). 5 minutes of video per recording file.
Impact (Event) Recording	When an impact is detected while driving, capturing 10 seconds before and 20 seconds after the impact. When impact recording is activated, a buzzer sound is played. ※The buzzer On/Off option can be changed in Settings > System > Alert > Event Alert Tone.
Manual Recording	Manual recording can be started by pressing the  button on the device. It will record 10 seconds before the button is pressed and 20 seconds after.

Reference: Location of Saved File


- Driving Recording: SD Card > INF Folder
- Impact Recording while driving: SD Card > Event Folder
- Impact Recording while parking: SD Card > Pevent Folder
- Motion / Time-lapse Recording: SD Card > PARK Folder
- Manual Recording: SD Card > USER Folder
- Screenshot Image: SD Card > Bookmark Folder

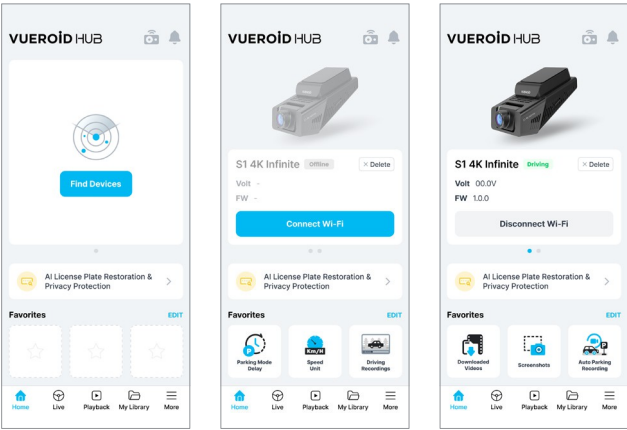
System Settings (Settings > System)

1. **Speaker Volume:** Volume of sound from your device.
2. **Alert**
 - Voice Alert: Turn on/off the every voice alert.
 - Event Alert Tone: Turn on/off the buzzer sound, that is played when impact is detected.
 - LED: Turn on/off the security LED & status LED on the main unit.
3. **Date&Time:** Set date and time zone used on device. Also you can select Daylight Saving Time option, the time will be set +1 hour based on current time zone.
When Daylight Saving Time ended, You must manually disable the Daylight Saving Time option.
4. **Memory Allocation:** The capacity of each folder on the Micro SD Card will be adjusted for saving recorded videos in driving/parking/events or driving only.
5. **LCD Off:** Choose the device's auto LCD Off time or screen saving mode.
※Even when 'Always On' and 'Clock on LCD' settings are enabled, the LCD may automatically turn off if the external temperature is too high.
6. **Speed Unit:** Choose speed unit (km/h or mph) used on device.
7. **Display Speed:** Choose whether to display the speed on the live view and recording video files.
8. **Wi-Fi:** Wi-Fi bandwidth based on your mobile phone. (2.5Ghz/5Ghz)
9. **System Information:** Showing device's model name, firmware version, Micro SD Card and SSID.
10. **SD Card Format:** Delete Micro SD Card's all files.
11. **Initialization:** You can initialize the device in two ways.
If you select **"Initialize"**, only the settings will be reset, and saved videos and other data will remain intact. If you select **"Factory Reset"**, all settings and saved videos will be erased, and the device will return to its original factory condition.
12. **App Download:** Showing QR code that links to the download page of the VUEROID HUB App.
13. **Watermark:** The video saved via VUEROID Dashcam will display VUEROID logo in the upper left corner. If you do not want, select Off at settings menu.
14. **Set Password & Change Password:** Set a password to access the settings of the device and mobile app. Additionally, you can change the password through the password change menu.
※Your password is also applied to the VUEROID HUB App.
※Once you set a password, you will not be able to access the settings to change it if you forget it. Please be careful not to forget your password. For initialize the password, please contact cs@vueroid.com
15. **Language:** Select the language to use on the device.

Viewer (Mobile)

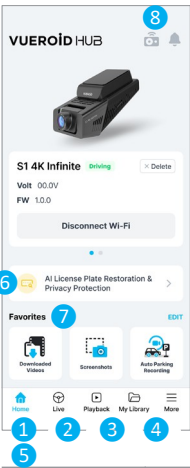
Connect with Smartphone

1. Download the 'VUEORID HUB' from the Google Play Store or Apple App Store on your smartphone.
2. Run the installed 'VUEORID HUB' App.
3. Press the  button and please wait until you hear the message "Wi-Fi is ready".
4. Please connect device by touching "Find Devices" in the app. Select your device to connect from the list of devices that can be connected nearby.



- The VUEORID HUB App requires the following system OS:
 - Requires Android 10 (Q) or later.
 - Requires iOS 15.0 or later.
- Initial connection, may take up 40 seconds.
- When navigating the app's Playback and Setting menus, the recording will be paused.

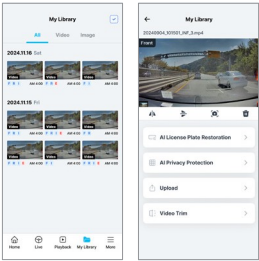
Layout Overview



Part	Function
1 Home	Home page / Move to home page
2 Live View	Monitoring the real-time video from the dashcam.
3 Playback	Playback videos saved in dashcam Micro SD Card.
4 My Library	You can view videos and photos that were saved separately on your phone from the playback. ※For AI based License Plate Restoration and AI privacy Protection features, video must be saved in My Library.
5 More	List of menus other than the fixed menu at the bottom of the app, such as settings.

- 6 AI License Plate Restoration & Privacy Protection

Video must be downloaded from playback for these features.
In the My Library tab, select the video you want to use the feature on, then choose the desired function to apply.
※The task will be performed using cellular data. If the server is busy, it may take some time to generate the output.

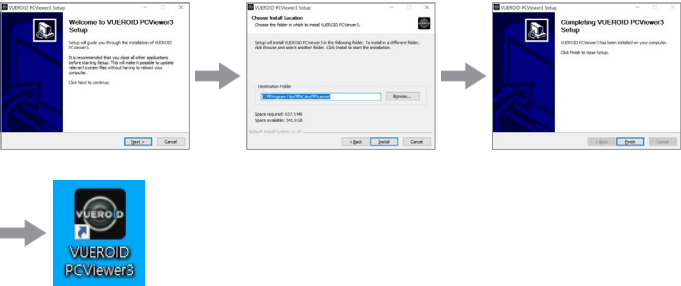


7 Favorites	Setting favorite features
8 Edit Connections	Edit/delete the list of devices connected to the app.

Viewer (PC)

Install PC Viewer

- 1. Download the PC Viewer from the VUEROID website.
(<http://www.vueroid.com/blog/product-support/s1-4k-infinite-2ch/>)
- 2. Run the installation file and follow the setup wizard.
- 3. Once installed, VUEROID PC Viewer shortcut icon will be created on the desktop.



- The VUEROID PC Viewer requires the following system OS:

Categories		Recommended Specifications
Windows	OS	Windows 10. (64bit) or later
	CPU	Intel i3 or later
RAM		4GB or more
Video Card		Intel HD Graphics 600 or more (Memory 3GB or more)
Graphic		DirectX 9 or more (Opengl)
HDD		Remaining Space: 500M or more
Internal Explorer		Microsoft Edge
MAC	OS	Mac OS X 10.7.5 (Mac OS X Lion/OS X Lion) and later
	CPU	64Bit Intel &Apple Silicon(ARM)

Layout Overview



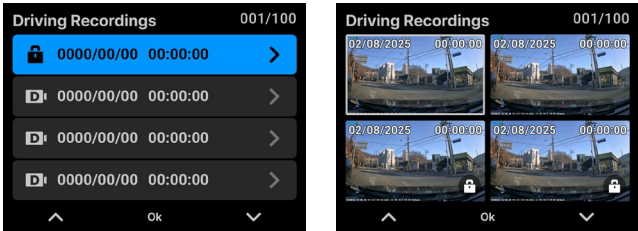
Part	Function
1 Short cut	Select Micro SD Card, Print(Export GPS, speed, and other data with thumbnails), Language, Video Editor etc. ※The AI License Plate Restoration and Privacy Protection features are available in the Video Editor menu. The task requires an internet connection. If the server is busy, it may take some time to generate the output.
2 Window Control	Top pin, Full screen, Maximize, Minimize, Close
3 Main Player	Main video player (Front Camera)
4 Sub Player	Videos from rear camera &interior camera
5 Player	Playback controls
6 Functions	Progress Bar, Map, Save, Play Speed, Volume
7 G-Sensor	G sensor data graph
8 Map	Location of the video recorded
9 Filtering	Filtering the video files
10 File List	Video file list

Playback

Playback on Dashcam

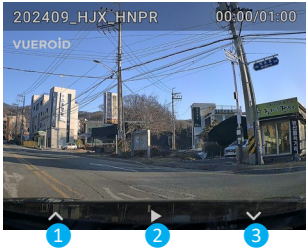
The saved videos can be found at the following path. Settings > Playback > Videos > Driving Recording, Parking Recording, Event Recording, Parking Event Recording or Manual Recording.

Video List

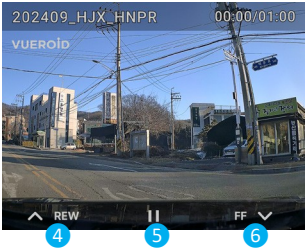


Part	Function
Move (Up/Down)	Press buttons. If long press the buttons, you can move to previous/next page.
Play	Press button.
Lock/Unlock &Delete	Press and hold the button and select Lock or Delete. If the video is locked, it cannot be deleted.
Change View Mode	Press to change list view mode (list, thumbnail.)

Video Stopped



Video Played

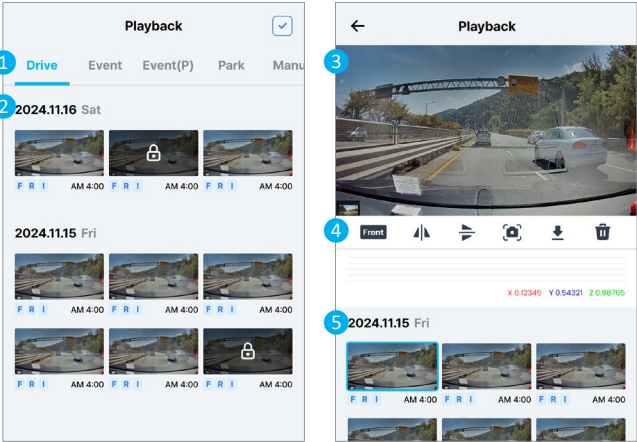


Part	Function
Previous File	To move to the previous video, press button.
Play	If you want to play video, press button. If you press and hold , a screenshot of the current screen will be taken and saved in the Images folder (Settings > Playback > Images).
Next File	To move to the next video, press button.
Rewind	To rewind the video by 5 seconds, press the button.
Pause	If you want to pause the video, press button. If you press and hold , a screenshot of the current screen will be taken and saved in the Images folder (Settings > Playback > Images).
Fast Forward	To fast forward the video by 5 seconds, press the button.

Playback

Playback on VUEROID HUB App

- 1. Please connect your phone and device according to the instructions on page 32.
- 2. Tap "Playback" at the bottom, then follow the instructions below to play the video.



Part	Function
① Recording Files	Drive, Event, Event(P), Park, Manual, Bookmark
② File Lists	Recorded Date, Thumbnails, Recorded Camera Channel, Recorded Time
③ Video Player	When you tap on a video, you can control playback (Previous, Rewind 5s, Play/Pause, Forward 5s, Next).
④ Video Options	Channel Switch, Flip (Horizontal/Vertical), Screenshot, Download, Delete
⑤ Related Videos	List of videos recorded on the same date as the selected video

Playback on PC Viewer

- 1. Remove Micro SD Card from the main unit.
※Before removing the Micro SD Card, make sure the main unit is turned off.
- 2. Insert the Micro SD Card into a adapter or card reader connected to PC.
- 3. Open the folder and play the video using the VUEROID PC Viewer.
(VUEROID PC Viewer is available at VUEROID official website.)
- 4. Click the "SD Card" button and select the Micro SD Card you want to open from the list, or right-click on the file list and click the 'Add files' button.
※If the Micro SD Card is not recognized in PC, press refresh button.
※You can also open the video files by dragging them from other folders to the file list.

Playback via USB-C port (OTG)

- 1. Turn off the Main Unit switch first, then detach the device from the Adhesive Mount or disconnect the hardwired power connection.
- 2. Connect the included C-C Data Cable to a PC or mobile device via a USB-C port.
- 3. Next, connect the cable to the device's USB-C port, then press and hold the Confirm button (ⓘ) while turning on the power switch.
- 4. When the Main Unit successfully enters OTG mode, you can access the videos and images on the SD card through File Explorer on a PC or a file app on a mobile device.

Firmware Upgrade

Using VUEROID HUB App

You can upgrade the firmware to the latest version through the VUEROID HUB App.

1. First, run VUEROID HUB App and connect device with smartphone.
2. When the app runs, app will check the current firmware version of the device.
If an upgrade is needed, please follow the app's instructions.
3. You can also upgrade the firmware from the settings menu in the VUEROID HUB App.

Using Micro SD Card

1. Remove the Micro SD Card after turn off the main unit.
2. Insert the Micro SD Card into computer.
3. Download the latest firmware from the VUEROID official website.
4. Paste the downloaded firmware file into "My Computer" > "SD Card" > the top of the list.
5. Disconnect the Micro SD Card from the PC.
6. While the main unit is turned off, insert the Micro SD Card correctly.
7. Turn on the device. The firmware will be upgraded automatically.
8. When the firmware upgrade is completed, the product will automatically be restarted to complete the upgrade.



Do not turn off the device or remove the Micro SD Card during the firmware upgrade. This may result in the loss of saved videos or device malfunction.

Compliance

FCC Statement

This device complies with Part 15 of the FCC Rules. Operation is subject to the following two conditions: (1) this device may not cause harmful interference, and (2) this device must accept any interference received, including interference that might cause undesired operation.

Note: This equipment has been tested and found to comply with the limits for a Class B digital device, pursuant to part 15 of the FCC Rules. These limits are designed to provide reasonable protection against harmful interference in a residential installation. This equipment generates, uses and can radiate radio frequency energy and, if not installed and used in accordance with the instructions, may cause harmful interference to radio communications. However, there is no guarantee that interference will not occur in a particular installation. If this equipment does cause harmful interference to radio or television reception, which can be determined by turning the equipment off and on, the user is encouraged to try to correct the interference by one or more of the following measures:

- Reorient or relocate the receiving antenna.
- Increase the separation between the equipment and receiver.
- Connect the equipment into an outlet on a circuit different from that to which the receiver is connected.
- Consult the dealer or an experienced radio /TV technician for help.

FCC CAUTION: Any changes or modifications to the equipment not expressly approved by the party responsible for compliance could void your authority to operate the equipment.

Compliance

CE Statement

Attention

This is Class B product. In a domestic environment, this product may cause radio interference, in which case the user may be required to take adequate measures.

The standards compliance label on this device contains the CE mark, which indicates that this system conforms to the provisions of the following European Council directives, laws, and standards:

- Electromagnetic Compatibility (EMC) Directive 2014/30/EU
- Low Voltage Directive (LVD) 2014/35/EU
- EN 55032/EN 55024 (European Immunity Requirements)
 - EN61000-3-2/JEIDA (European and Japanese Harmonics Spec)
 - EN61000-3-3

KC Statement

Class B device (broadcasting communication equipment for household use):
This device obtained EMC registration for household use (Class B), and can be used in residential environments as well as in commercial, industrial or business environments. Sellers and/or users should take note of this.

RoHS

This device complies with the requirements of EU Directives 2002/95/EC (RoHS) and 2011/65/EU (RoHS II) on the restriction of the use of certain hazardous substances in electrical and electronic equipment (amended by 2015/863/EU).

NC& does not manufacture any materials contained in the device and is not responsible under any legal theory. NC& will not be responsible for defending or indemnifying any party in the event of non-compliance with the materials. However, as part of the EU RoHS compliance program, NC& will continue to communicate with suppliers and maintain compliance records for all materials.



FCC ID : 2BC09-S10UQ

VUEROiD